

CLASSIC CMI – CATIA TEAMCENTER ENTERPRISE INTEGRATION.

CATIA V4 AND V5 INTEGRATION.

CMI is the T-Systems high-end solution for the integration of the CAD systems CATIA V4/V5 with the PDM system Teamcenter Enterprise. The CATIA integration product combines the PLM power of Teamcenter Enterprise with the CAD superiority of CATIA and offers the full advantage of collaborative product development.

ALL FROM ONE SOURCE.

With over 15 years of experience, the extremely successful CATIA Teamcenter Integration – CMI; by now productively used in more than 9000 installations worldwide; became an industry standard application. It provides proven and reliable functionality for a large range of customers around the world. With a great number of integrated use cases CMI is “ready to use” in various industries including Automotive OEM/supplier, Aerospace & Defense OEM/supplier and Manufacturing. By offering the CATIA V4 and V5 integration as a unified whole, CMI enables a smooth collaboration between CATIA V4 and CATIA V5 even in the same project.

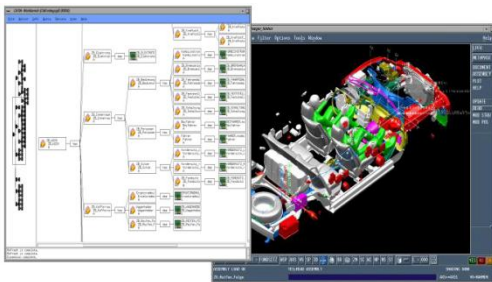
All CATIA files and structure are managed and controlled by Teamcenter Enterprise. This enables the designer to use all the document management functions and collaborative product development abilities of Teamcenter Enterprise with CATIA data structures.

KEY FEATURES.

- Change and usage control of CATIA data in a collaborative product development (e.g. version/configuration/view control, access management, life cycle and workflow)
- Integration of bill of material and geometry data
- Working with multiple level assembly structures
- Design in configuration context
- Intuitive CMI Workbench handling allows data transfer from one single PDM browser to both CATIA V4 and V5

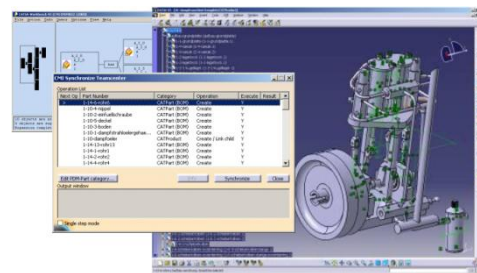
CATIA V4 INTEGRATION.

The CATIA V4 integration provides the user with a sophisticated way of working with multi-level assembly structures in CATIA V4.



CATIA V5 INTEGRATION.

The CATIA V5 integration offers the ability to drive product structures and BOM from both CAD and PDM.



TECHNICAL HIGHLIGHTS.

- CATIA V5 local and released cache support
- On-the-fly creation of CATIA V5 assemblies out of Teamcenter Enterprise product structures
- Support of CATDrawing, CATProcess, CATAnalysis
- Support of Design Tables, CATCatalogs and alternative shape representations
- Virtual Workbench – Collects several product structures in a single CATIA V5 window
- CMI Archive – Packages whole CATIA structures in a single PDM object

SUPPORTED PLM SYSTEMS.

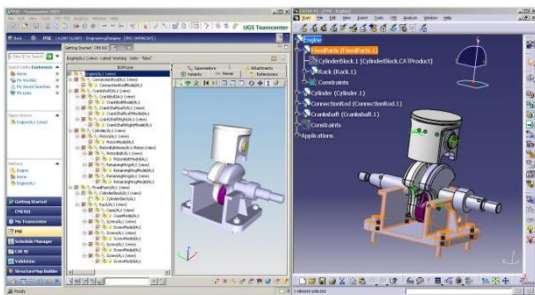
Application	Release
Teamcenter Enterprise	2005 SR1, 2007, 8.1, and 9.0, other releases on request
CATIA V4	4.2.4 and 4.2.5
CATIA V5	R19, R20, R21, V5-6R2012, V5-6R2013, V5-6R2014, V5-6R2015, other releases on request
Platform	OS Level
IBM	AIX 5.x (32/64 Bit), 6.1
Hewlett Packard	HP-UX 11
SUN	Solaris 8, 10
LINUX (Server)	SUSE Enterprise 9.0, 10.0, 11.0
Microsoft Windows	Windows 7

CMI RII – CATIA TEAMCENTER INTEGRATION. THE ENTERPRISE LEVEL TEAMCENTER INTEGRATION.

With CMI RII T-Systems extends the existing CMI CATIA integration suite in direction of Teamcenter. T-Systems transformed all the powerful features of CMI to the new PLM architecture, in a way that the CATIA integration is now a natural component of the Teamcenter Rich Client application.

CHARACTERISTICS.

- High End direct CATIA V5 to Teamcenter Integration for collaborative design in a configured PDM environment.
- Highly configurable and customizable.
- Proven industry standard with many references.
- Immersive integrated within Teamcenter and CATIA V5 (CAA).
- Seamlessly integrated with VIS tools (WYSIWYG).
- Works smoothly with all other Rich Client applications, like the visualization tools, Structure Navigator and My Teamcenter.
- Provides access to a wide range of proven design processes from the automotive and aerospace industry coming from classic CMI and VPM.



BENEFITS FOR OUR TEAMCENTER ENTERPRISE CUSTOMERS.

- Familiar CATIA User Interface, thus best recognition and acceptance by CATIA designers.
- High productivity from the first day on – 100% CMI compatibility.
- Very little training for CATIA designers is required.
- Easy migration: CMI RII is capable to handle CATIA data originating from CMI/Teamcenter Enterprise.
- CMI customers can upgrade from classic CMI.

BENEFITS FOR CUSTOMERS COMING FROM TC ENGINEERING.

Easy deployment of the product:

- Simple installation with installers for Windows and UNIX.
- No CAA RADE license required at the customers side.
- T-Systems delivers a fully working CATIA CAA module.

Direct support of the solution by T-Systems PLM team:

- Customizing/development support (off and on-site).
- Installation support.
- On-site or WEB-based training.
- 2 software releases per year allow quick realization of new customer requirements.
- Dedicated WEB-site to support the CATIA Teamcenter Integration: software download, patches, documentation, etc.
- Direct connection to the T-Systems CATIA/Teamcenter development.

KEY FEATURES AND TECHNICAL HIGHLIGHTS.

- Send structures to CATIA directly from Structure Manager (PSE).
- Synchronizes and reconnects CATIA structures to Teamcenter.
- Management of position matrices.
- Selections from VIS-viewer/mockup can be sent directly to CATIA.
- For more please flip the page to classic CMI.

SUPPORTED PLM SYSTEMS.

Application	Release
Teamcenter	2007.2, 8.3, 9.1, and 10.1
CATIA V4	4.2.4 and 4.2.5
CATIA V5	R19, R20, R21, V5-6R2012, V5-6R2013, V5-6R2014, V5-6R2015, other releases on request

Platform	OS Level
SUN (Server)	Solaris 10
LINUX (Server)	SUSE Enterprise 9.0, 10.0
Microsoft Windows	Windows 7
other platforms on demand	

CONTACT

Phone: +49 40 30600 5544
E-mail: cmi_support@t-systems.com
Internet: <http://www.cmi-support.com>
<http://servicenet.t-systems.com/cmi>