

Streamline your SAP S/4HANA transformation journey with MAX4SAP



Preconfigured, flexible templates to replicate processes faster for industrial manufacturing

T Systems

Addressing the market gap

In the competitive business landscape, manufacturing companies strive for a balance between standardization and customization. While standardized frameworks reduce costs and streamline operations, unique procedures provide a competitive edge. When transitioning to SAP S/4HANA, it is crucial to focus on activities that add the most value.

With the expiration of the SAP Model Company, there is a significant gap in the market for a robust, pre-built solution. T-Systems' MAX4SAP fills this gap by providing a standardized SAP S/4HANA system with end-to-end (E2E) processes that can be seamlessly implemented in your current landscape.

- ▶ **Pre-built solutions:** No need to re-invent the wheel. MAX4SAP offers pre-configured processes, customized developments, and system configurations.
- ▶ **Jump-start project implementation:** Begin projects faster with ready-to-use templates and best practices, minimizing delays and reducing time to value.
- ▶ **Leverage SAP-integrated delivery framework:** MAX4SAP is based on proven SAP Best Practices to ensure quality and efficiency throughout the implementation process.

What is MAX4SAP?

MAX4SAP is a pre-configured SAP S/4HANA template designed specifically for industrial manufacturing, offering standardized processes for easy implementation and customization.

- ▶ **Master copy for SAP S/4HANA systems:** MAX4SAP serves as a master template for SAP S/4HANA systems, complete with Process Control Architecture (PCA) and integration with Solution Manager (SolMan).
- ▶ **Exclusive tool:** MAX4SAP is not a sandbox or demo system exclusive tool; it is accessible only by the core MAX team, ensuring its integrity and alignment with the best practices.



MAX4SAP: The smart choice for SAP S/4HANA implementation



60% out-of-the-box processes coverage



20% better time to market



Industrialized delivery driven by industry tools and assets



Ready adoption for LoB solutions like DM, IBP, Ariba, etc.



Ready for global programs with complex tax such as Brazil and Mexico

Key benefits of MAX4SAP

Speed and efficiency

Quickly create customer-specific sandboxes for “show and tell” sessions and fit-gap analysis.

Comprehensive coverage

Includes over 35 E2E processes and almost 400 process steps, covering critical functions such as Finance (FI/CO), Sales & Distribution (SD), Production Planning (PP), and more.

Master data templates

Pre-configured master data for seamless integration and faster implementation.

Clean process step library

Organized transactions and Fiori apps for consistent and efficient process execution.

Flexible implementation

MAX4SAP's modular nature allows for partial implementation, catering to specific customer needs.

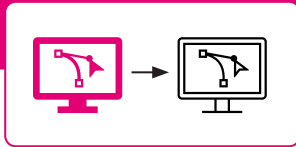
T-Systems' MAX4SAP approach

1

A copy of the MAX4SAP template is made to a T-Systems sandbox, exclusively for the customer.

The customer decides if the below items are required, additionally for the system:

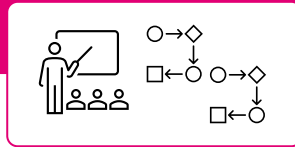
- Master data
- SolMan content



2

The “show and tell” sessions and/or fit-gap analysis are executed with the support of the MAX4SAP template and the T-Systems consultants.

The customer will have the possibility to access the system and the SolMan MAX4SAP solution.

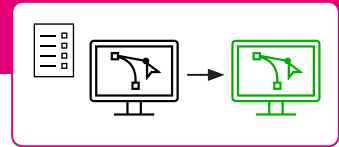


3

The results form the workshops:

- Customizations
- Business process descriptions
- Collaboration diagrams
- Test cases

These are imported into a customer-owned sandbox/development system.



Contact us

www.t-systems.com/contact
00800 33 090300*

** from the following countries:
Austria, Belgium, Denmark, France, Germany,
Great Britain, Luxembourg, Netherlands,
Norway, Poland, Portugal, South Africa,
Spain, Sweden and Switzerland.*

Published by

T-Systems International GmbH
Marketing
Hahnstrasse 43d
60528 Frankfurt am Main
Germany



MAX4SAP for industrial manufacturing

Pre-configured processes

Designed specifically for the industrial manufacturing sector, ensuring that all the relevant processes are ready for implementation from the beginning.

Two-level process structure

E2E processes provide a high-level overview, while modular processes break down each step, in detail, ensuring clarity and consistency.



Ready to accelerate your SAP S/4HANA transformation?

MAX4SAP is a comprehensive, flexible template for SAP S/4HANA migration, accommodating both standard and unique business processes. With our expert guidance, industrial manufacturing firms can achieve a streamlined and successful transition to SAP S/4HANA, positioning themselves for future growth and innovation.

Contact us today to learn more about [MAX4SAP](#) and how it can transform your business operations.