

ESSENTIAL ROADMAP FOR ENTERPRISE MIGRATION

BENEFITS OF T-SYSTEMS' CLOUDIFIER PROCESS FOR SAP ON HYBRID IT

For companies using SAP, the magic word for entry into the digital age is 'SAP S/4HANA', because the replacement of the SAP Business Suite offers organisations a massive range of innovation potential - from a personalised and simplified user experience (UX) for your SAP applications with SAP Fiori, Cloud, Internet of Things (IoT) and Big Data to real-time analytics, mobility and more.

But every company is unique and is at a different point in the transformation process. An experienced and responsible partner like T-Systems will accompany you on your path into the digital age with end-to-end expertise – and most importantly, at the speed that is right for you.

T-Systems offers a standardised SAP transformation approach to hybrid deployments with the Cloudifier process. We provide a clear and documented roadmap for design, consultation, planning, transformation, implementation and operations for SAP on Hybrid IT.

Design, Transform and Operate SAP on Hybrid IT



End-to-End Design

Fast and Objective

- Customised design that suits your business needs.
- SAP applications and hardware infrastructure advisory.
- SAP transformation roadmap.
- Keep project within budget.



Transformation

Clear Plans for Proper Execution

- Installation - SAP installation such as SAP HANA setup and configuration on appliance, with options for high availability and disaster recovery.
- Migration – 'Lift and Shift' existing SAP ECC landscapes or upgrades to Suite on HANA (SOH) or S/4 HANA. The target infrastructure can be on-premises or in the cloud.



Secure Operations

- Receive support from T-Systems.
- Operations and service delivery management.
- SAP Basic operations, firewalls, OS, network operations, configurations and upgrades.

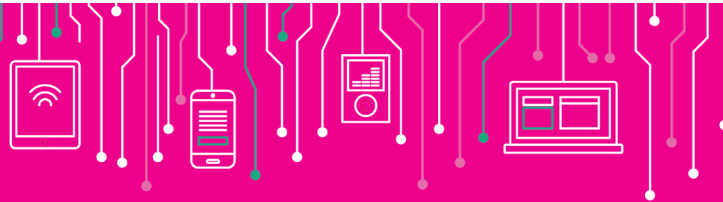
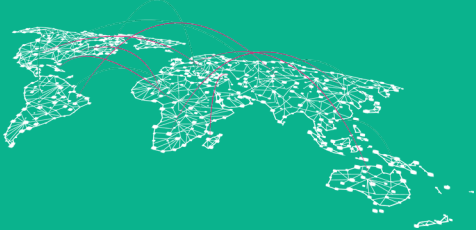
THE T-SYSTEMS AND HPE ADVANTAGE

With about 64 million SAPs, T-Systems runs the world's largest cloud-hosting platform for SAP. T-Systems can operate HPE equipment in a hybrid IT environment supported by OpEx-based billing. You have the option of locating your infrastructure on-premises or co-located at a T-Systems data centre.

HPE has over

9,500+

SAP solution experts managing over 2,000 data centre for SAP customers.



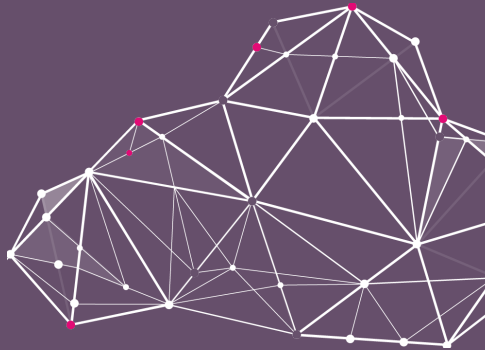
5,000 TB

volume of data operated by T-Systems within the SAP environment.

Approximately

50%

of SAP HANA server deployments are on HPE systems.



Reduces SAP operating costs by

30%



T-Systems is an SAP Platinum Partner leading with a standardised SAP S/4HANA transformation approach.



HPE has

2,400+

SAP HANA customers.

With about 64 million SAPs, T-Systems runs the **WORLD'S LARGEST Cloud-hosting platform for SAP.**

Contact T-Systems to arrange for a personalised discovery discussion and start fast-tracking your digital journey!

T-Systems

www.t-systems.com.sg

contacts@t-systems.com

Published by T-Systems Singapore Pte Ltd, A Deutsche Telekom Group Company, 23 Tai Sing Drive, #03-00 Deutsche Telekom Centre, Singapore 535224

Hewlett Packard
Enterprise

Silver
Partner