

MOVING TO THE CLOUD IN 7 STEPS

THE PERFECT INTRODUCTION TO THE CLOUD WORLD

Have you made the decision to migrate to the cloud? Congratulations! You've taken a forward-thinking approach for your organisation. To assist you, here are 7 key aspects you should factor in for a successful cloud migration strategy.

POTENTIAL ANALYSIS OF THE EXISTING ICT LANDSCAPE

Begin with a value assessment – a comprehensive analysis of the performance of the existing ICT landscape. This phase is conducted on the basis of key performance indicators (KPIs) and comprises of three modules: benchmarking, value opportunities, and cloud maturity.

TARGET ARCHITECTURE AND ROADMAP TO THE CLOUD

Your next focus should be a detailed analysis at application level, examining the development of solutions, application roadmaps, and transformation services. An analysis of the operational status quo creates the conditions for defining the future mode of operation. You should develop an efficient target architecture to move to the cloud securely. All decisions should be underpinned with a concrete business case.

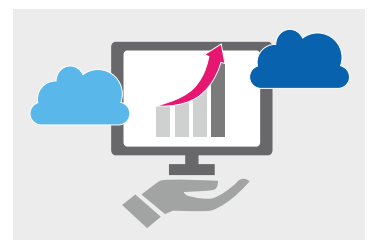
1 BENCHMARKING

In benchmarking, you determine relevant key performance indicators (KPIs) for your organization's existing ICT landscape and compare them with best of breed and industry standards. KPI-based benchmarking supplies a very good overview of your ICT's current performance. Should you require it, we can assist you with a baseline of more than 100 relevant KPIs to begin with.



2 VALUE OPPORTUNITIES

By comparing your KPIs to market benchmarks, you will be able to identify weaknesses and potential value levers. The goal is to formulate scenarios for optimizing your ICT landscape that make it more competitive in the long run. The result of an extensive analysis is an opportunity portfolio you can use for strategic discussions that continually improve your performance and make your organization more competitive.



3 CLOUD MATURITY

The final aspect of the assessment phase is evaluating cloud maturity. This can be done on the basis of various disciplines, the foundation being the "cloud maturity model". Results should be shown as degrees of maturity in the individual disciplines that give you a comprehensive tool for systematically planning your cloud strategy and efficiently initiating its operational implementation.



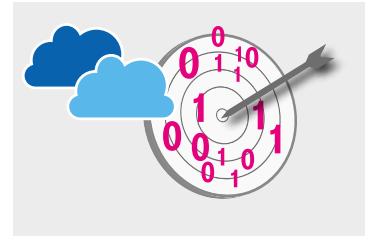
4 ARCHITECTURE DISCOVERY

In order to plan a smooth migration to the cloud, analysis of the interaction between all ICT components is necessary to obtain a full overview of your existing ICT infrastructure and application landscape. Should you require assistance, we are able to examine your IT landscape using specially developed, tried-and-tested tools and procedures. For example, we use an automated scan to deliver detailed information on the interplay between applications and infrastructure and our experts extract relevant data and supply in-depth analysis resulting in comprehensive architecture discovery.



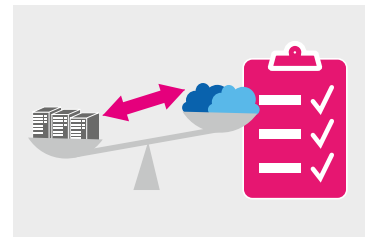
5 TARGET ARCHITECTURE AND APPLICATION ROADMAP

Once you have identified the current mode of operation and, for example, which servers are linked to business applications and which are not your next step is to define scenarios for the future mode of operation and design your new target architecture with suitable cloud components. Planning of the target architecture should be underpinned by a concrete implementation plan ("application roadmap"). To do this we hold workshops to enable comprehensive validation of the system landscape, in which we use interviews and dynamic visualizations to identify the current and future mode of operations. We also define quick wins that can be initiated within three months and deliver rapid financial gains.



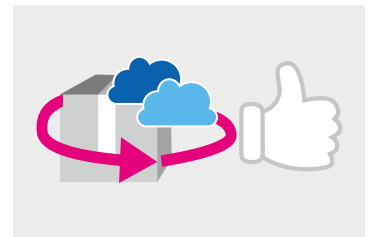
6 BUSINESS CASE

You should then create a comprehensive transformation plan for the envisaged target architecture that comprises relevant measures and includes compliance with specific data privacy and security policies. Your current operational costs and those for the new target architecture should also be determined. The business case enables a holistic evaluation of your actual situation and should reveal clear saving potential. Concrete transformation could be implemented using our "Transformation Factory", which offers full service transformation at transparent prices.



7 WORRY-FREE IMPLEMENTATION

Proper preparation can provide you with a worry-free implementation roadmap for migrating to the cloud within the space of a few weeks. Done properly, you should be able to correctly assess the current performance of your company's IT and obtain concrete support in creating your customized cloud strategy. The foundation should be a business case that presents the opportunities and risks transparently, and with a suitable action plan, you can soon be benefitting from the agility and cost-effectiveness of the cloud.



T-Systems offers you comprehensive support: with more than ten years of experience in cloud transformation and well over 10,000 migrated applications, we can guide you precisely to your goal when you migrate.

Even though you decide how to proceed in a flexible manner and according to your individual needs, T-Systems can operate and oversee the IT applications, providing specialist advice on everything from hardware, user support, and maintenance, through to continual modernization of the software and innovations.

Arrange a non-committal preliminary meeting or get cracking right away with a scoping workshop to select applications for the proof of concept.

ARRANGE AN APPOINTMENT NOW: DYNAMICIT@TELEKOM.DE

MORE INFORMATION: [T-SYSTEMS.COM/DYNAPP](https://www.t-systems.com/dynapp)